

Garden Cottage - 3x3/4x4/5x5m - ht 2,20/2,50m



Aesthetically pleasing and original, the «Chinese Hat» is always one of the party

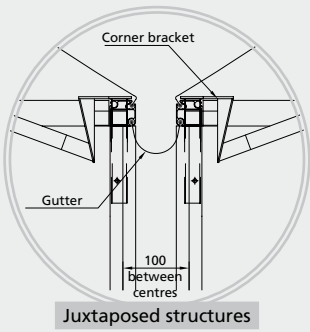
Frame

- Legs, eaves purlin, roof braces in anodised aluminium profile
- Central junction piece and adjustable feet in galvanised steel
- Cone in galvanised steel with extension for shaping of the roof

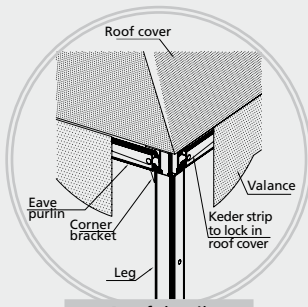
Covers

- PVC coated polyester fabric, white translucent, flame retardant to M2 French standard
- Roof cover with scalloped valance
- Peripheral walls split centrally, with tiebacks and outside lacing

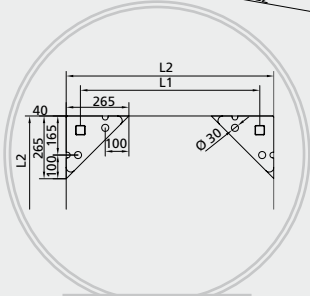
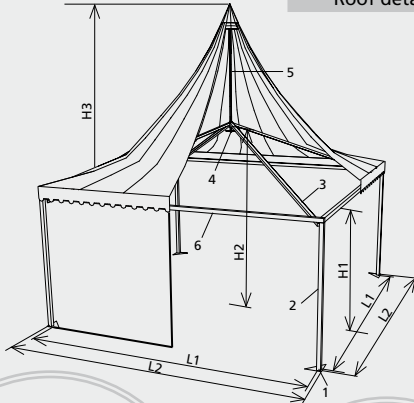




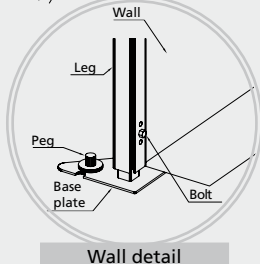
Juxtaped structures



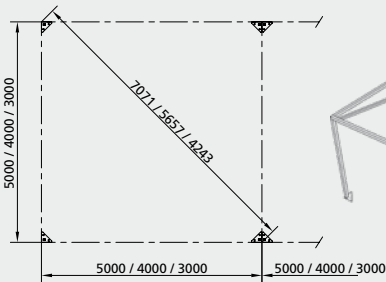
Roof detail



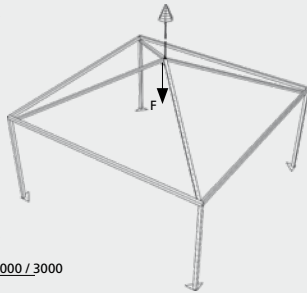
Base plate



Wall detail



Setting out



Load bearing

Specifications		3 x 3 m		4 x 4 m		5 x 5 m	
		ht 2,20	ht 2,50	ht 2,20	ht 2,50	ht 2,20	ht 2,50
Span	L2	3	3	4	4	5	5
Dist. between leg centres	L1	2,9	2,9	3,9	3,9	4,9	4,9
External ridge height	H3	3,94	4,24	5,04	5,34	5,25	5,55
Internal ridge height	H2	2,6	2,9	2,84	3,14	3,06	3,36
Eaves height	H1	2,14	2,44	2,14	2,44	2,14	2,44
Long side bay	L2	3	3	4	4	5	5
Base plate	1	237x237	237x237	237x237	237x237	237x237	237x237
Leg	2	63x63	63x63	63x63	63x63	63x63	63x63
Roof brace	3	40x40	40x40	40x40	40x40	40x40	40x40
Central junction	4						
Cone + extension	5						
Eaves purlin	6	63x63	63x63	63x63	63x63	63x63	63x63

Erection / Dismantling	3 x 3 m	4 x 4 m	5 x 5 m
Number of people	2	2	2
Total duration of erection	20 min	30 min	40 min
Necessary equipment not provided	2 no. 3 m step ladders - 1 sledgehammer - 1 crowbar		
Time saved for dismantling	30%		

Anchoring / Weighting	Anchoring			Weighting	
	Uplift force kg	Coef.	Number of pegs	Uplift force kg	Coef.
Structure 3 x 3 m	210	2	2 lg 500	170	1,65
Structure 4 x 4 m	225	2	2 lg 500	185	1,65
Structure 5 x 5 m	350	2	2 lg 500	290	1,65

Load Bearing	Height 2,20 - 2,50 m
With snow	F = 0 kgg
Without snow	F = 125 kg